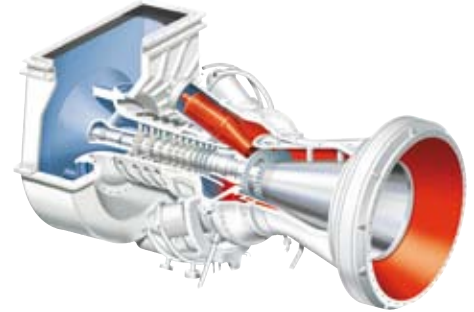
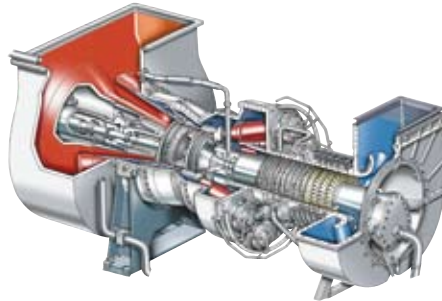
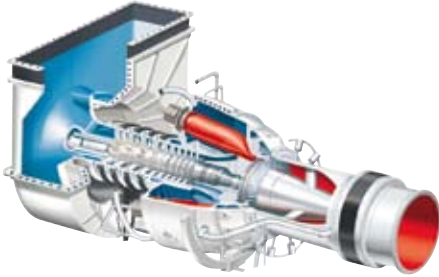


Industrial gas turbines

The comprehensive Siemens product range from 4 to 47 megawatts



SGT-100

Power generation	5.4MW(e)
• Fuel:	Natural gas*
• Frequency:	50/60Hz
• Electrical efficiency:	31%
• Heat rate:	11,613kJ/kWh (11008Btu/kWh)
• Turbine speed:	17,384 rpm
• Compressor pressure ratio:	15.6:1
• Exhaust gas flow:	20.6kg/s (45.4lb/s)
• Exhaust temperature:	531°C (988°F)
• NO _x emissions (with DLE, corrected to 15% O ₂ dry):	≤ 25ppmV

SGT-200

Power generation	6.75MW(e)
• Fuel:	Natural gas*
• Frequency:	50/60Hz
• Electrical efficiency:	31.5%
• Heat rate:	11,418kJ/kWh (10,823Btu/kWh)
• Turbine speed:	11,053 rpm
• Compressor pressure ratio:	12.2:1
• Exhaust gas flow:	29.3kg/s (64.5lb/s)
• Exhaust temperature:	466°C (871°F)
• NO _x emissions (with DLE, corrected to 15% O ₂ dry):	≤ 25ppmV

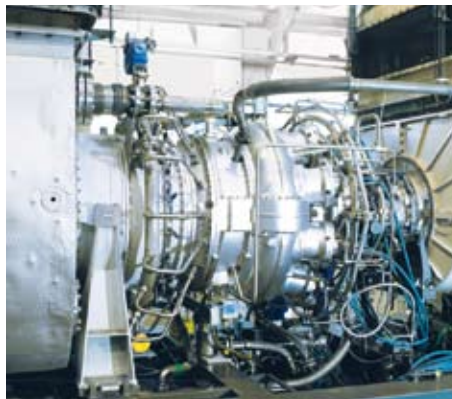
SGT-300

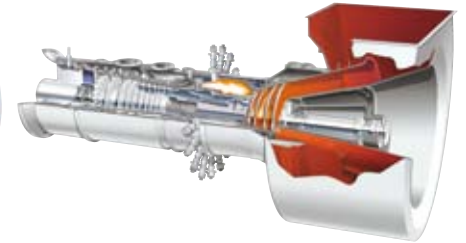
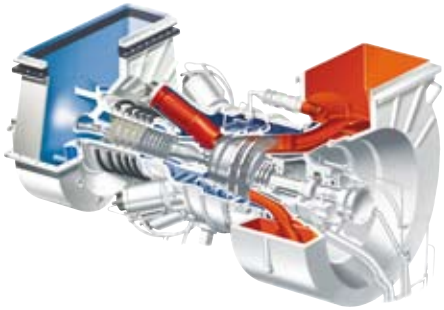
Power generation	7.90MW(e)
• Fuel:	Natural gas*
• Frequency:	50/60Hz
• Electrical efficiency:	30.6%
• Heat rate:	11,773kJ/kWh (11,158Btu/kWh)
• Turbine speed:	14,010 rpm
• Compressor pressure ratio:	13.7:1
• Exhaust gas flow:	30.2kg/s (66.6lb/s)
• Exhaust temperature:	542°C (1008°F)
• NO _x emissions (with DLE, corrected to 15% O ₂ dry):	≤ 15ppmV

Mechanical drive	5.7MW (7,640bhp)
• Fuel:	Natural gas*
• Efficiency:	32.9%
• Heat rate:	10,948kJ/kWh (7,738Btu/bhph)
• Turbine speed:	13,000 rpm
• Compressor pressure ratio:	14.9:1
• Exhaust gas flow:	19.7kg/s (43.4lb/s)
• Exhaust temperature:	543°C (1009°F)
• NO _x emissions (with DLE, corrected to 15% O ₂ dry):	≤ 25ppmV

Mechanical drive	7.68MW (10,300bhp)
• Fuel:	Natural gas*
• Efficiency:	33%
• Heat rate:	10,906kJ/kWh (7,708Btu/bhph)
• Turbine speed:	10,950 rpm
• Compressor pressure ratio:	12.3:1
• Exhaust gas flow:	29.5kg/s (65.0lb/s)
• Exhaust temperature:	489°C (912°F)
• NO _x emissions (with DLE, corrected to 15% O ₂ dry):	≤ 15ppmV

Mechanical drive	8.2MW (11,000bhp)
• Fuel:	Natural Gas*
• Efficiency:	34.6%
• Heat rate:	10,400 kJ/kWh (7,350 Btu/bhph)
• Turbine speed:	11,500 rpm
• Compressor pressure ratio:	13.3:1
• Exhaust gas flow:	29.0 kg/s (63.9 lb/s)
• Exhaust temperature:	498°C (928°F)
• NO _x emissions (with DLE, corrected to 15% O ₂ dry):	≤ 15ppmV





SGT-400

Power generation **12.90MW(e)**

• Fuel:	Natural gas*
• Frequency:	50/60Hz
• Electrical efficiency:	34.8%
• Heat rate:	10,355kJ/kWh (9,815Btu/kWh)
• Turbine speed:	9,500 rpm
• Compressor pressure ratio:	16.8:1
• Exhaust gas flow:	39.4kg/s (86.8lb/s)
• Exhaust temperature:	555°C (1,031°F)
• NO _x emissions (with DLE, corrected to 15% O ₂ dry):	≤ 15ppmV

Mechanical drive **13.40MW (18,000bhp)**

• Fuel:	Natural gas*
• Efficiency:	36.2%
• Heat rate:	9,943kJ/kWh (7,028Btu/bhph)
• Turbine speed:	9,500 rpm
• Compressor pressure ratio:	16.8:1
• Exhaust gas flow:	39.4kg/s (86.8lb/s)
• Exhaust temperature:	555°C (1,031°F)
• NO _x emissions (with DLE, corrected to 15% O ₂ dry):	≤ 15ppmV

SGT-500

Power generation **19.10MW(e)**

• Fuel:	Natural gas
• Frequency:	50/60Hz*
• Electrical efficiency:	33.8%
• Heat rate:	10,664 kJ/kWh (10,107 Btu/kWh)
• Turbine speed:	3,600 rpm
• Compressor pressure ratio:	13:1
• Exhaust gas flow:	97.9 kg/s (215.9 lb/s)
• Exhaust temperature:	369°C (697°F)
• NO _x emissions (with DLE, corrected to 15% O ₂ dry):	≤ 42ppmV

Mechanical drive **19.52 MW (26,177bhp)**

• Fuel:	Natural gas*
• Efficiency:	34.5%
• Heat rate:	10,432kJ/kWh (7,373Btu/bhph)
• Turbine speed:	3,450 rpm
• Compressor pressure ratio:	13:1
• Exhaust gas flow:	97.9 kg/s (215.9 lb/s)
• Exhaust temperature:	369°C (697°F)
• NO _x emissions (with DLE, corrected to 15% O ₂ dry):	≤ 42ppmV

SGT-600

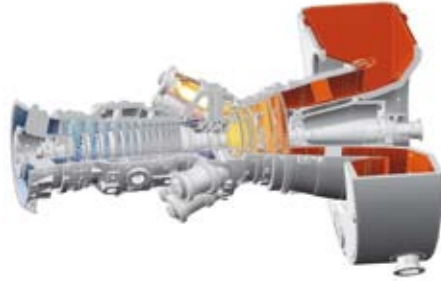
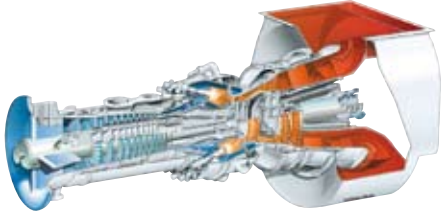
Power generation **24.77MW(e)**

• Fuel:	Natural gas*
• Frequency:	50/60Hz
• Electrical efficiency:	34.2%
• Heat rate:	10,533kJ/kWh (9,983Btu/kWh)
• Turbine speed:	7,700 rpm
• Compressor pressure ratio:	14:1
• Exhaust gas flow:	80.4kg/s (177.3lb/s)
• Exhaust temperature:	543°C (1,009°F)
• NO _x emissions (with DLE, corrected to 15% O ₂ dry):	≤ 25ppmV

Mechanical drive **25.40MW (34,100bhp)**

• Fuel:	Natural gas*
• Efficiency:	35.1%
• Heat rate:	10,258kJ/kWh (7,250Btu/bhph)
• Turbine speed:	7,700 rpm
• Compressor pressure ratio:	14:1
• Exhaust gas flow:	80.4kg/s (177.3lb/s)
• Exhaust temperature:	543°C (1,009°F)
• NO _x emissions (with DLE, corrected to 15% O ₂ dry):	≤ 25ppmV





SGT-700

Power generation **31.21MW(e)**

- Fuel: Natural gas*
- Frequency: 50/60Hz
- Electrical efficiency: 36.4%
- Heat rate: 9,882kJ/kWh (9,367Btu/kWh)
- Turbine speed: 6,500 rpm
- Compressor pressure ratio: 18.6:1
- Exhaust gas flow: 94kg/s (208lb/s)
- Exhaust temperature: 528°C (983°F)
- NO_x emissions (with DLE, corrected to 15% O₂ dry): ≤ 15ppmV

Mechanical drive **32.04MW (42,966bhp)**

- Fuel: Natural gas*
- Efficiency: 37.4%
- Heat rate: 9,629kJ/kWh (6,806Btu/bhph)
- Turbine speed: 6,500 rpm
- Compressor pressure ratio: 18.6:1
- Exhaust gas flow: 94kg/s (207lb/s)
- Exhaust temperature: 528°C (983°F)
- NO_x emissions (with DLE, corrected to 15% O₂ dry): ≤ 15ppmV

SGT-750

Power generation **35.93MW(e)**

- Fuel: Natural gas*
- Frequency: 50/60Hz
- Electrical efficiency: 38.7%
- Heat rate: 9,296kJ/kWh (8,811 Btu/kWh)
- Turbine speed: 6,100 rpm
- Compressor pressure ratio: 23.8:1
- Exhaust gas flow: 113.3 kg/s (249.8 lb/s)
- Exhaust temperature: 462°C (864°F)
- NO_x emissions (with DLE, corrected to 15% O₂ dry): ≤ 15ppmV

Mechanical drive **37.11MW (49,765bhp)**

- Fuel: Natural gas*
- Efficiency: 40.0%
- Heat rate: 9,002 kJ/kWh (6,362Btu/bhph)
- Turbine speed: 3,050–6,405 rpm
- Compressor pressure ratio: 23.8:1
- Exhaust gas flow: 113.3 kg/s (249.8 lb/s)
- Exhaust temperature: 462°C (864°F)
- NO_x emissions (with DLE, corrected to 15% O₂ dry): ≤ 15ppmV

SGT-800

Power generation **47.00MW(e)**

- Fuel: Natural gas*
- Frequency: 50/60Hz
- Electrical efficiency: 37.5%
- Heat rate: 9,597kJ/kWh (9,096Btu/kWh)
- Turbine speed: 6,608 rpm
- Compressor pressure ratio: 19:1
- Exhaust gas flow: 131.5kg/s (289.9lb/s)
- Exhaust temperature: 544°C (1,011°F)
- NO_x emissions (with DLE, corrected to 15% O₂ dry): ≤ 15ppmV

*No intake or exhaust loss; other gaseous, liquid and/or dual fuel options available

